

PONSSE

**MORE EFFECTIVE  
CUTTING AND  
PROCESSING**

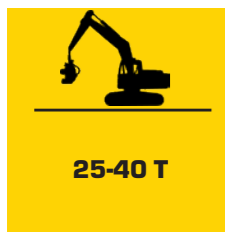
**H10**



## PONSSE H10

# ***MORE EFFECTIVE CUTTING AND PROCESSING***

The PONSSE H10 harvester head offers unbeatable quality and productivity in a new size class. PONSSE H10 is intended for harvesting and processing using sturdy track-based machines. It has been designed and built for heavy-duty processing in demanding conditions. Its solid structure, firm grip and powerful feed guarantee a high efficiency ratio and reliability for years to come.



PONSSE H10 has been designed specifically for demanding harvesting conditions and tested by customers working on large diameter trees. No compromises can be made over durability and power at North American logging sites. H10 has been designed with advanced technology to be smart and sturdy.

Regardless of its large size and high power, H10 is highly precise. The Opti control system helps to feed the trees quickly and to cut them to the correct length, with high accuracy. It has been developed together with customers over several years. As a result, the harvester head is highly precise, enjoyable to use and easy to maintain.



**895 mm  
(35.2 in)**



**from 2,600 kg  
(5,732 lbs)**

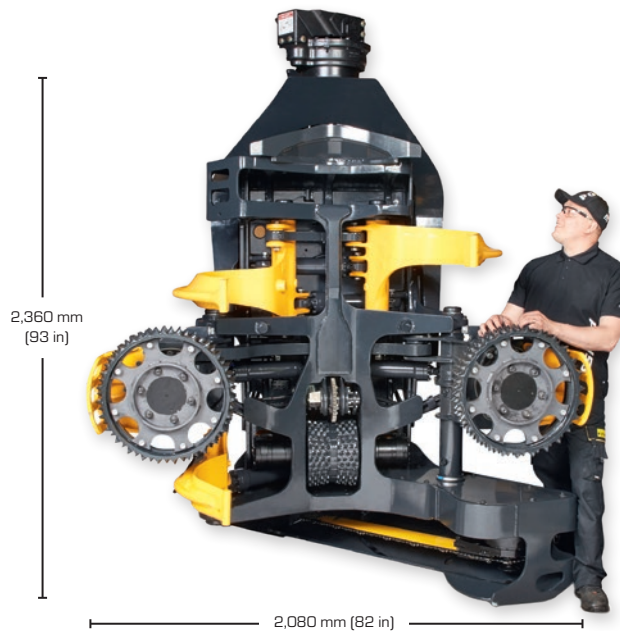


**max 43 kN  
(9,667 lbf)**



**950 mm (37.5 in)  
Top Saw 600 mm  
(24 in)**

# H10



2,360 mm  
(93 in)

2,080 mm (82 in)

## MEASUREMENTS

Weight:	from 2 600 kg (5,732 lbs) excl. rotator
Length:	2 120 mm (83.5 in)
Width (max):	2 080 mm (82 in)
Height without rotator, processing position:	2 360 mm (93 in)

## FEEDING UNIT

Feed system:	3 rollers
Calculated gross feed force:	43 kN (9,667 lbf) or 34 kN (7,643 lbf)
Feed speed (max):	4.0 m/s (13.1 ft/s) or 5.3 m/s (17.4 ft/s)
Feed roller opening:	895 mm (35.2 in)
Feed motors:	1 250/630 cc or 940/500 cc

## DELIMITING UNIT

Number of knives:	1 floating, 1 fixed, 2 or 3 moving knives
Opening of front knives (max):	900 mm (35.4 in)
Opening of rear knives (max):	930 mm (36.6 in)

Delimiting knives and feeding rollers are separately controlled.

Technical details and specifications may vary in different installations. These can be related to carrier, base machine or Ponsse harvester installations. standard and optional equipment.

## SAW UNIT

Hydraulic chainsaw	
Saw bar length:	1 100 mm (45 in)
Cutting diameter:	950 mm (37.5 in)
Chain:	3/4"

## TOP SAW

Saw motor:	19cc
Top saw bar:	750 mm (30 in)
Top saw cutting diameter:	600 mm (24 in)
Top saw chain:	0.404"

## TRACKED CARRIER

Operating pressure:	31 MPa (4,061 psi)
Carrier weight (min):	25 tons

## OPTIONAL EQUIPMENT

Plenty of optional equipment is available in addition to the comprehensive PONSSE H10 standard equipment. Consult your nearest Ponsse Service Center or dealer for more information on the standard and optional equipment.



### Ponsse Plc

Ponssentie 22  
FI-74200 Vieremä  
FINLAND  
Tel. +358 20 768 800  
www.ponsse.com

### Ponsse UK Ltd.

4 Annan Business Park  
Annan  
Dumfriesshire  
DG12 6TZ  
UNITED KINGDOM  
Tel. + 44 1461 207 510

### Ponsse Machines Ireland Ltd

Cappakeel, Emo  
Portlaoise  
R32NN28  
Laois  
IRELAND  
Tel. +353 57 863 3762

### Ponsse North America, Inc.

4400 International Lane  
Rhineland, WI 54501  
USA  
Tel. +1 715 369 4833  
Fax +1 715 369 4838

# PONSSE

**A logger's best friend**  
[www.ponsse.com](http://www.ponsse.com)